

JUMP Capacity Building Initiative

Journey to Unlock Management Potential



JUMP Capacity Building Initiative Partners

Allegany Franciscan Ministries
Collaborative Labs @ St. Petersburg College
Lackey Consulting
Nonprofit Leadership Center of Tampa Bay
Robertson Consulting Group, Inc.
Tampa Bay Healthcare Collaborative

Agenda

- Capacity Building Concept & Definition
- JUMP Capacity Building Initiative Overview
- Participant Experience
- Application Process & Timeline
- Questions & Answers

Capacity Building Concept

Strengthening nonprofits so that they can better achieve their missions

Capacity Building Definition

The development of an organization's core skills and capabilities, such as leadership, management, finance and fundraising, programs and evaluation, in order to build the organization's effectiveness and sustainability

JUMP Vision & Mission

Vision

• An innovative nonprofit community that is a sustainable social and economic engine

Mission

• Transforming the nonprofit community through measurable investments

Program Goals

- Change and expand perceptions about capacity building and sustainability
- Coordinate existing and create new capacity-building resources for nonprofit organizations
- Create a platform for a commitment to on-going collaboration within and between sectors

Participant Experience

- **Kate Kelly**
Executive Director
Kimberly Home Pregnancy & Resource Center

Organizational Benefits

- Obtain board and staff input through the organizational self-assessment tool
- Establish a capacity building team
- Develop and implement a personalized capacity building plan
- Apply a change leadership framework
- Network and receive peer support
- Acquire and share capacity building resources
- Achieve a more engaged board and staff

Key Eligibility Criteria

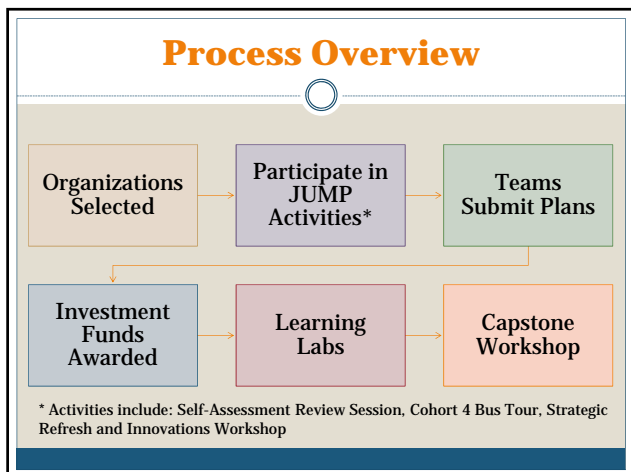
- Current annual revenue between \$500,000 and \$5,000,000
- Serve residents in Hillsborough and/or Pinellas County
- Executive Director/CEO in current position for at least one year
- Connection to mission and values of funding partners; currently Allegheny Franciscan Ministries
website: www.afmfl.org

Preferred Eligibility Criteria

- Display a commitment to design innovative systems and implement social change to improve the organization
- Have established contingency plans in the event of a fiscal crisis, emergency or natural disaster (i.e. Emergency Preparedness Plan)
- Participate with and/or be a member of the Tampa Bay Healthcare Collaborative

Self -Assessment & Application

- Selection for JUMP is highly competitive and includes an organizational self-assessment and an application submitted online
- Self-assessment is based on work of The Finance Project and should be completed separately by multiple people with the organization
- Application should be completed by the Executive Director/CEO



JUMP Cohort 4 Timeline

August 30	Self-Assessments & Application Deadline
By Sept 30 th	Decision Notifications
October 4 th	Self-Assessment Review Session
October 25 th	JUMP Cohort 4 Bus Tour
November 15 th	Strategic Refresh Session
December 6 th	Innovations Workshop
Beginning January 2014	Learning Labs & Capstone Workshops

Contact Information

- General Questions:**
Carrie Hepburn
 Executive Director, Tampa Bay Healthcare Collaborative
 Email: director@tampabayhealth.org
 Phone: (727) 812-4952
- Organizational Self Assessment:**
Shelley Robertson, EdD
 Principal, Robertson Consulting Group, Inc.
 Email: info@snrobertson.com
 Phone: (239) 633-3241